



MAINE DEPARTMENT OF  
INLAND FISHERIES AND WILDLIFE

# Maine Deer Hunting



Libby Camp's

## **ABOUT MAINE DEER HUNTING**

- **Big North Woods bucks**
- **Vast accessible land**
- **Limitless bow hunting opportunity**
- **Wilderness experiences**

**Explore our woods, waters and wildlife**

## **HUNT MAINE**

**[mefishwildlife.com](http://mefishwildlife.com)**

## BOUNDLESS OPPORTUNITY

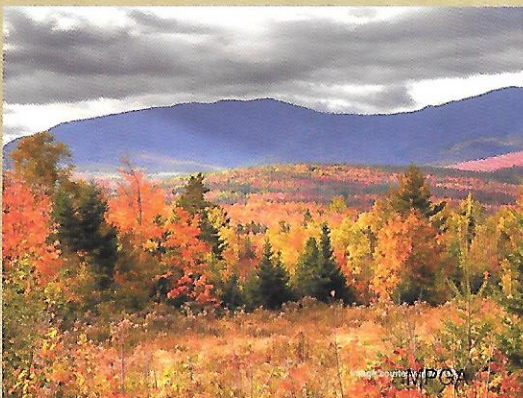
Maine is one of the few places left in the eastern U.S. where a hunter can leave civilization behind, walk through undeveloped land all day, and potentially not encounter another hunter.

## PUBLIC LANDS

Maine has hundreds of thousands of acres of public lands in wildlife management areas, state forests, public reserve lands and other parcels, all open to hunting.

## PRIVATE LANDS

Maine contains several million acres of privately-owned, working forest lands. Most of these lands are open to the public, either for free or for a nominal fee. A vast network of unpaved roads supports forestry operations. Visiting hunters are reminded that specific rules of the road may apply in certain areas, and they should always be respectful of those working in the area. Hunters are also encouraged to seek landowner permission before hunting on private land.



## BIG BUCK POTENTIAL

Maine is home to one of the largest subspecies of white-tailed deer in North America. Minimal hunting pressure in the North Woods affords bucks a chance to reach full maturity, where some achieve live weights of nearly 400 pounds.



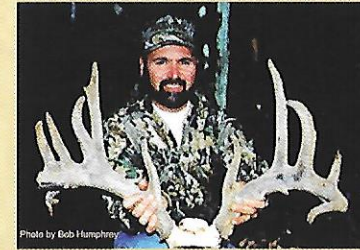
Every year, hunters take Maine deer with a dressed weight well over 200 pounds, with many approaching 300 pounds. Maine consistently produces more Boone and Crockett bucks than any other New England state.

## MANAGEMENT GOALS

Maine manages the deer herd to maintain maximum hunting and viewing opportunities. Deer harvests range from a low of .08 harvested bucks/100mi<sup>2</sup> in northern Maine, to a high of 2.35 harvested bucks/100mi<sup>2</sup> in southern Maine. In 2013, the mean dressed weight of yearling bucks was 120.5lbs, about 15lbs heavier than the average for the northeast U.S.

In 2013, Maine biologists recorded a yearling buck frequency of 42% and our adult deer, those 2.5 years or older, averaged 162.5lbs, with a range of 81lbs-268lbs. Of the 2,838 adult bucks (2.5 years or older) we sampled, 54% sported 8 or more points, 30% had 6-7 points, with the remaining 16% carrying 5 or fewer points. Whatever your interest, Maine will provide you with the opportunity to harvest a truly exceptional deer.

## EXPANDED ARCHERY



Maine established expanded archery areas to provide deer hunting opportunities in locations where deer populations can withstand

additional hunting pressure. Most are characterized by residential development interspersed with small woodlots.

Hunters who have a valid archery license may purchase one expanded archery antlered permit and multiple expanded archery antlerless permits. Nearly all land in the expanded archery hunting area is privately owned, and hunters are strongly encouraged to obtain landowner permission during the expanded archery season.

## TRACKING

Snow often blankets the ground during the later part of the deer season, giving hunters a chance to ply the age-old tactic of tracking down a big North Woods buck.

Hunters often drive remote logging roads until they cut fresh tracks, then set out on foot in hopes of meeting the beast that made them.



## MAINE PROFESSIONAL GUIDES

### Hiring a Guide

Non-resident and resident hunters alike opt to hire a registered Maine guide for their hunt.

Registered Maine Guides have a long and colorful history and are recognized around the world as the gold standard in outdoor skills and knowledge. Rigorous testing and compliance standards ensure that guides are professionals dedicated to quality, ethical and legal outdoor experience for all.

For more information including tips on how to hire a guide, and a searchable list of guides by region and specialty, visit the Maine Professional Guides Association website at:



[www.maineguides.org](http://www.maineguides.org)

## MAINE SPORTING CAMPS

Maine Sporting Camps offer a traditional experience unique to the Maine Woods. Association members provide a high quality recreational opportunity for individuals and their families, one you'll remember long after you return home.

A Maine Sporting Camp provides hearty meals and comfortable lodging in the wild Maine Woods, giving you more time afield.



[www.mainesportingcamps.com](http://www.mainesportingcamps.com)

## MAINE HUNTING LAWS

Maine hunting laws and regulations are produced by the Maine Department of Inland Fisheries and Wildlife. They are available online or at more than 800 licensing agents statewide.

[www.mefishwildlife.com](http://www.mefishwildlife.com)

## LICENSES

Hunting licenses and permits may be purchased online, 24-7, or from more than 800 statewide licensing agents.

[www.mefishwildlife.com](http://www.mefishwildlife.com)

## MAPS

The **Maine Hunting and Fishing Map** details all the Wildlife Management Areas, Public Lands and National Wildlife Refuges open to hunting. Request your copy by calling: 207-287-8000.

[www.mefishwildlife.com](http://www.mefishwildlife.com)

