



MAINE DEPARTMENT OF
INLAND FISHERIES AND WILDLIFE

Maine Bear Hunting



ABOUT MAINE BEAR HUNTING

- **Dense bear population**
- **High success rate**
- **Experienced guides**
- **Multiple seasons**
- **Vast accessible land**

Explore our woods, waters and wildlife

HUNT MAINE

mefishwildlife.com

BOUNDLESS OPPORTUNITY



Paul Cyr

Maine's bear season runs from the last Monday in August through the last Saturday in November. Bears can be hunted with bait during the first four weeks of the season, with hounds for a six-week period that overlaps the last two weeks of the bait season, and by still-hunting and stalking throughout the entire season.

In September and October, trappers can set one cable foot restraint or cage trap for bears. Hunters can take one bear by hunting and one bear by trapping. Bears can be found throughout the state, but bear populations are highest in the northern and Downeast sections of Maine.

Due to the black bear's secretive nature and the dense forests they inhabit, few hunters are successful still hunting or stalking black bear. Maine's bear season coincides with both the archery and firearms deer seasons, and during years with an abundance of natural food, bears are taken by opportunistic deer hunters.

HOUND HUNTING

The hound season spans a six-week period that overlaps the last two weeks of the bait season.

Hunting with hounds is physically demanding. An exercise program will put you and your dogs in the shape you need to be to hunt completely and effectively.

When hunting with hounds, always consider your location, and if possible, seek landowner permission.

Consider working with a Registered Maine Guide or a skilled houndsman in order to increase your chances of success.

Non-residents who wish to hunt with dogs must hire and hunt in the presence of a Registered Maine Guide.



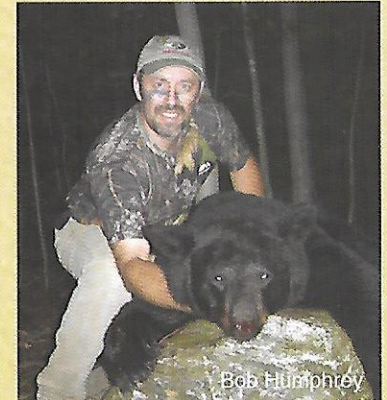
Photo by Bob Humphrey

BAIT HUNTING

Bears can be hunted over bait during the first four weeks of the season.

Roughly 80 percent of the annual bear harvest is taken over bait, where hunters typically experience a 25 percent success rate.

Success rates are highest for non-residents who employ a Registered Maine Guide.

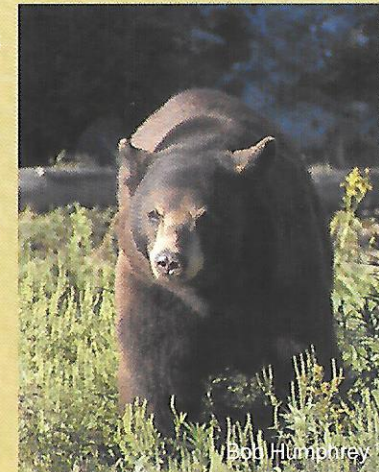


Bob Humphrey

BIG BEAR POTENTIAL

In Maine, there is always the potential to take a very large bear. Each year, hunters annually harvest bears that are over 300 pounds in size.

While most bears taken by hunters weigh less than that, the Maine State Record for black bear is 699 pounds, and was taken in 2012 near Greenville.



Bob Humphrey

MAINE PROFESSIONAL GUIDES

Hiring a Guide

Non-resident and resident hunters alike opt to hire a registered Maine guide for their hunt.

Registered Maine Guides have a long and colorful history and are recognized around the world as the gold standard in outdoor skills and knowledge. Rigorous testing and compliance standards ensure that guides are professionals dedicated to quality, ethical and legal outdoor experience for all.

For more information including tips on how to hire a guide, and a searchable list of guides by region and specialty, visit the Maine Professional Guides Association website at:



www.maine-guides.org

MAINE SPORTING CAMPS

Maine Sporting Camps offer a traditional experience unique to the Maine Woods. Association members provide a high quality recreational opportunity for individuals and their families, one you'll remember long after you return home.

A Maine Sporting Camp provides hearty meals and comfortable lodging in the wild Maine Woods, giving you more time afield.



www.mainesportingcamps.com

MAINE HUNTING LAWS

Maine hunting laws and regulations are produced by the Maine Department of Inland Fisheries and Wildlife. They are available online or at more than 800 licensing agents statewide.

www.mefishwildlife.com

LICENSES

Hunting licenses and permits may be purchased online, 24-7, or from more than 800 statewide licensing agents.

www.mefishwildlife.com

MAPS

The **Maine Hunting and Fishing Map** details all the Wildlife Management Areas, Public Lands and National Wildlife Refuges open to hunting. Request your copy by calling: 207-287-8000.

www.mefishwildlife.com



Krystal Whitmore photo